

# LIFEPO4 ENERGY STORAGE SYSTEM

**51.2 V · 628 Ah · 32 kWh**

Residential lithium iron phosphate (LiFePO4) energy storage system built with 16 EVE 628Ah cells (Grade A, new) and an intelligent JK-PB2A16S BMS featuring a 4.3" touchscreen, Bluetooth, RS485 and CAN. Metal enclosure on casters, compatible with the leading hybrid inverters on the market.



- 32 kWh**  
TOTAL ENERGY
- 51.2 V**  
NOMINAL VOLTAGE
- 628 Ah**  
CAPACITY
- 10,000+**  
LIFE CYCLES

- EVE GRADE A CELLS
- SMART JK BMS
- 4.3" TOUCHSCREEN
- BLUETOOTH · RS485 · CAN
- 2A ACTIVE BALANCING
- CASTER MOUNTED
- ✓ CE CERTIFIED
- ✓ 5-YEAR WARRANTY

**CONNECTION PANEL**  
Positive/negative, DC breaker & comms ports

**4.3" TOUCHSCREEN**  
Live voltage, current & SOC monitoring

**BUILT-IN HANDLE**  
Recessed grip + caster mobility

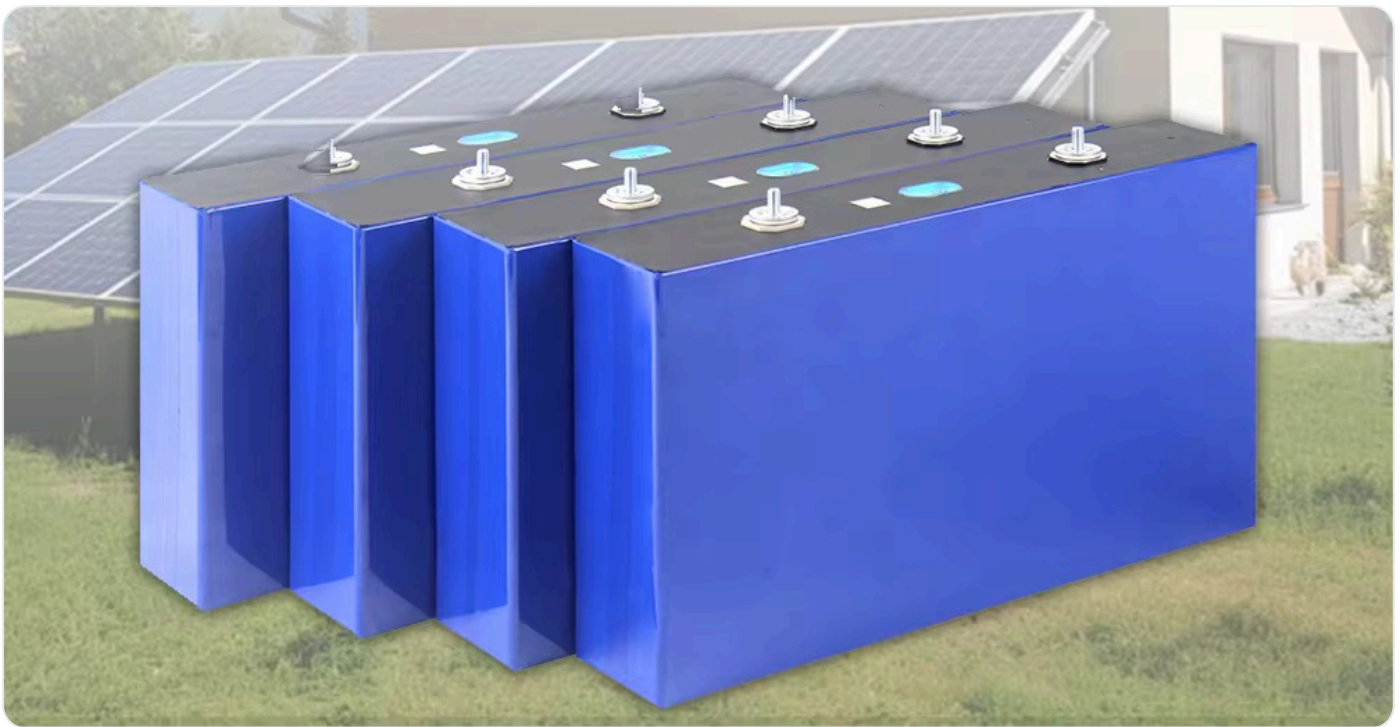
**PRODUCT VIEWS**



**ELECTRICAL DATA**

Cell chemistry	LiFePO4
Cell manufacturer	EVE – Grade A, new
Configuration	16S1P
Nominal voltage	51.2V
Voltage range	40 – 58.4V

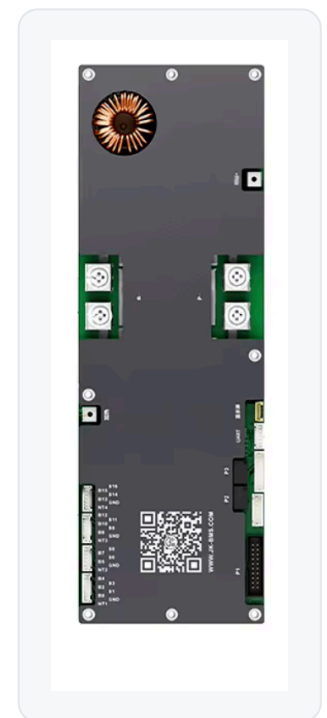
Max charge voltage	58.4 V (3.65 V/cell)
Rated capacity	628 Ah
Total energy	32.15 kWh
Depth of discharge	up to 90% DoD
Life cycles	≥ 10,000 (typical)



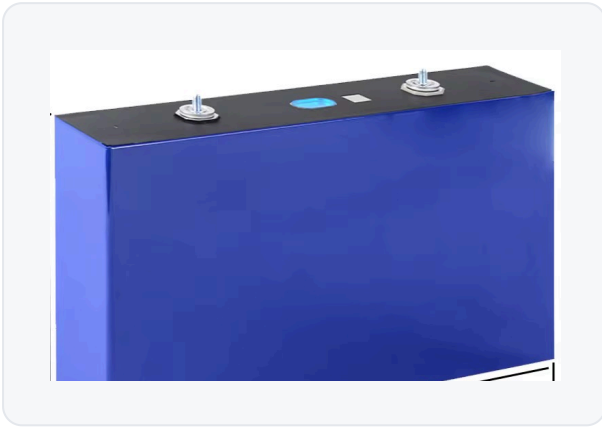
**BATTERY MANAGEMENT SYSTEM — JK-PB2A16S**

Display	4.3" touchscreen LCD
Communication	Bluetooth · RS485 ×2 · CAN
Serial ports	RS232 · UART
Active balancing	2 A (active equalizer)
Configuration	Mobile app + touchscreen
Extra interfaces	NTC · Dry · Parallel module
Protections	OV/UV · OC · short-circuit · temp.
DC Breaker	integrated

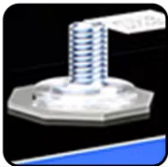
- POSITIVE
- NEGATIVE
- OFF/ON
- RST
- ADD
- DRY
- RS485-1/CAN
- RS232
- RS485-2



**EVE 628AH CELL & MECHANICAL DATA**



Cabinet dimensions (W×D×H)	695 × 395 × 890 mm
Mounting	vertical, on casters
Enclosure material	metal
System weight	220 kg
Cell dimensions	352.3 × 207.2 × 71.7 mm
Cell weight	~11.5 kg (+300 g)
Energy / cell	2.01 kWh (3.2 V × 628 Ah)
Warranty	5 years
Certification	CE



**THREADED TERMINAL**  
Bolt-on version terminal



**QR TRACEABILITY**  
Per-cell QR tracking code



**EXPLOSION-PROOF VALVE**  
Pressure-relief safety vent

**INVERTER COMPATIBILITY**

Deye

Pylontech

Growatt

Victron Energy

Voltronic Power

INVT

Goodwe

SMA

SRNE

and more

**APPLICATIONS**

Residential storage

Solar self-consumption

Hybrid system

Backup / UPS

Off-grid